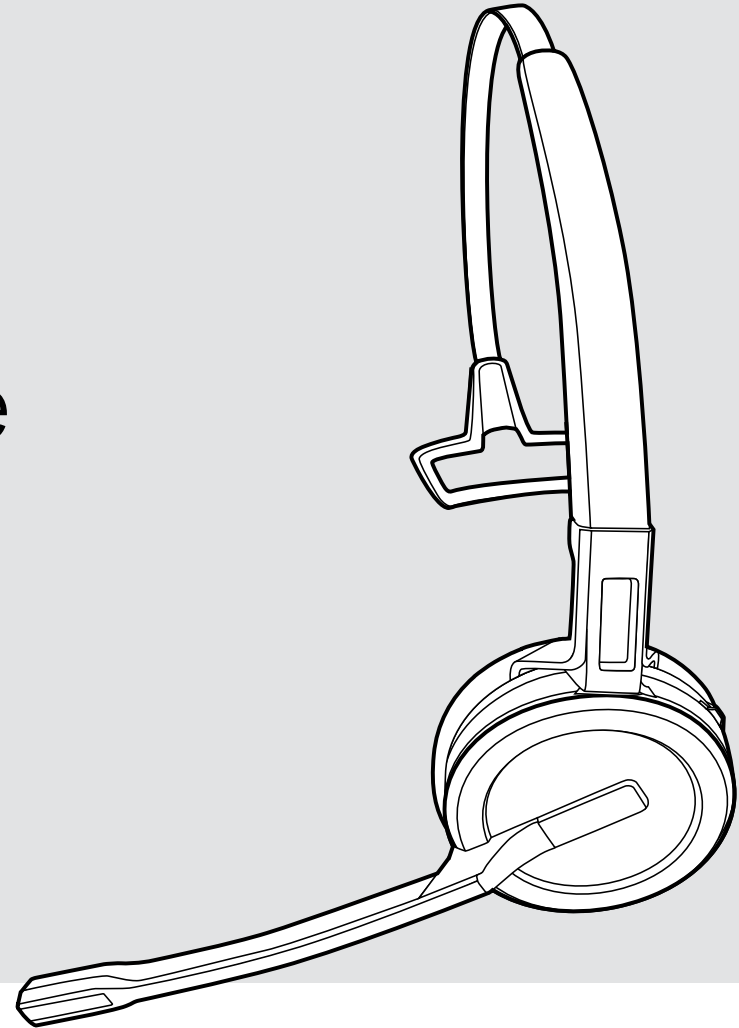


EPOS

IMPACT SDW 10 HS

Battery Removal Guide



DSEA A/S

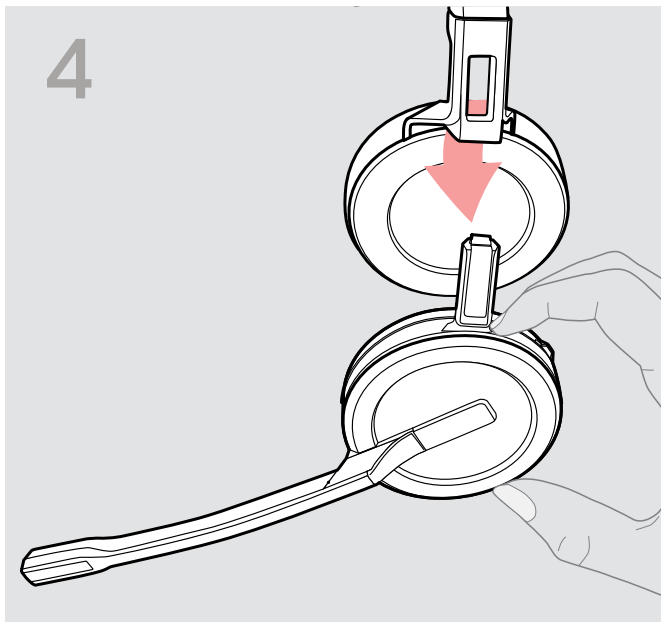
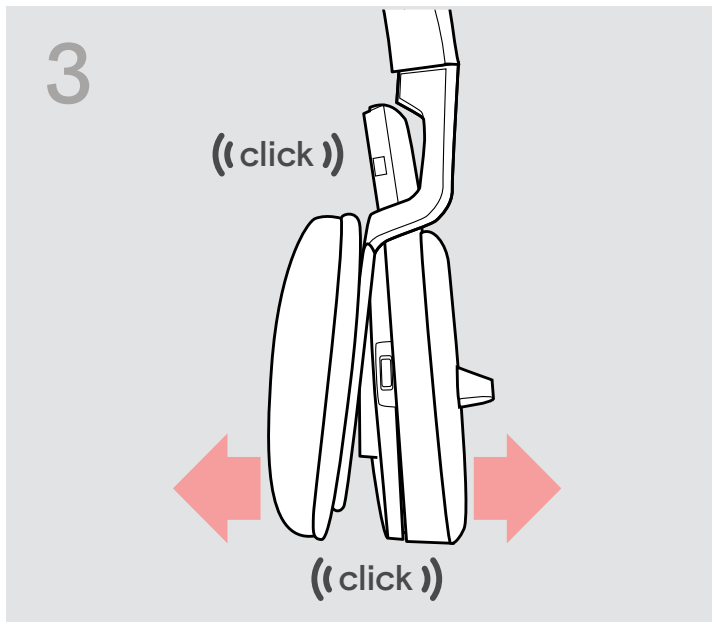
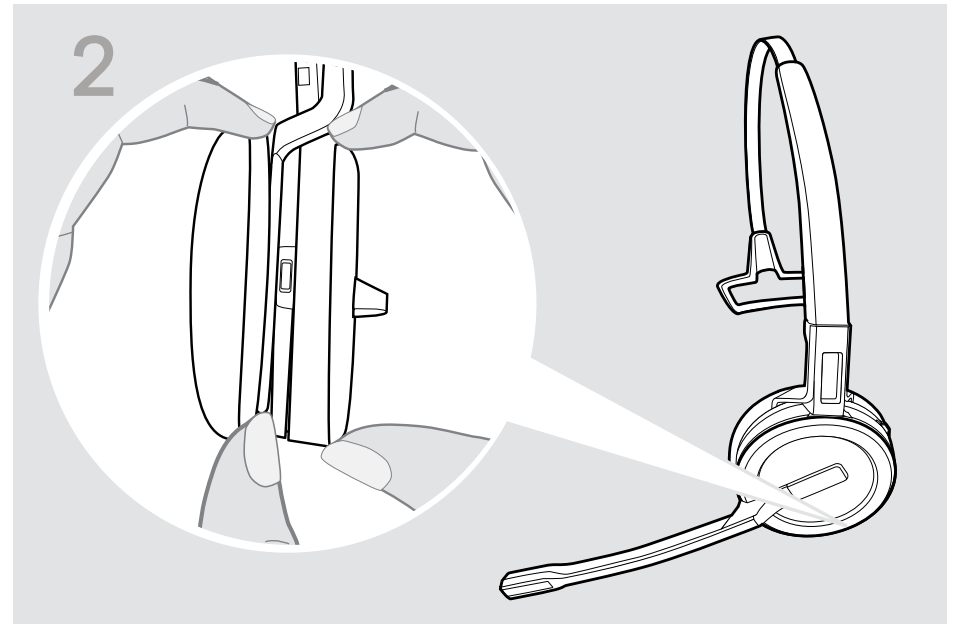
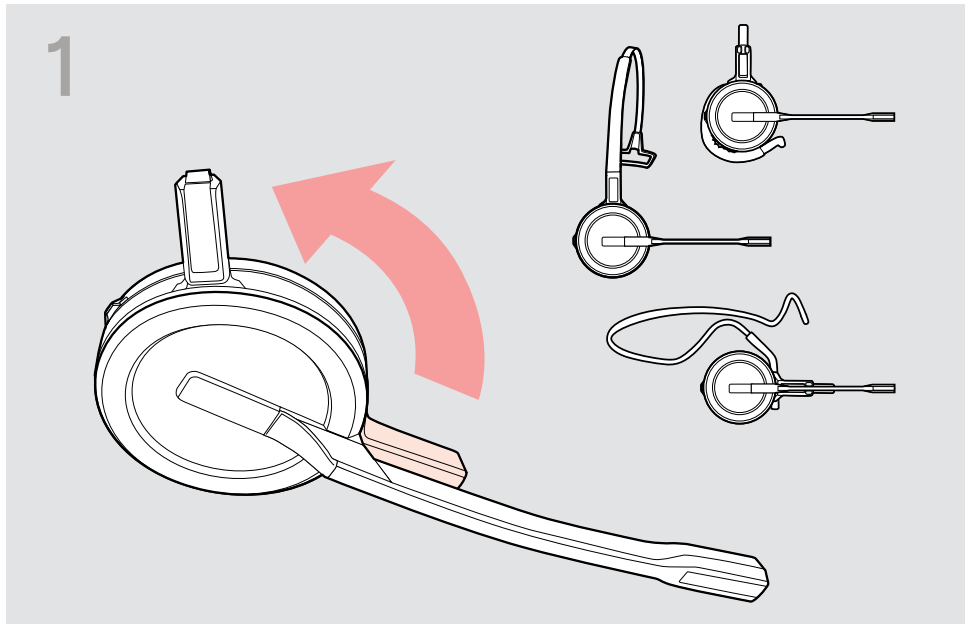
Kongebakken 9, DK-2765 Smørum, Denmark

www.eposaudio.com

Publ. 12/21, A01

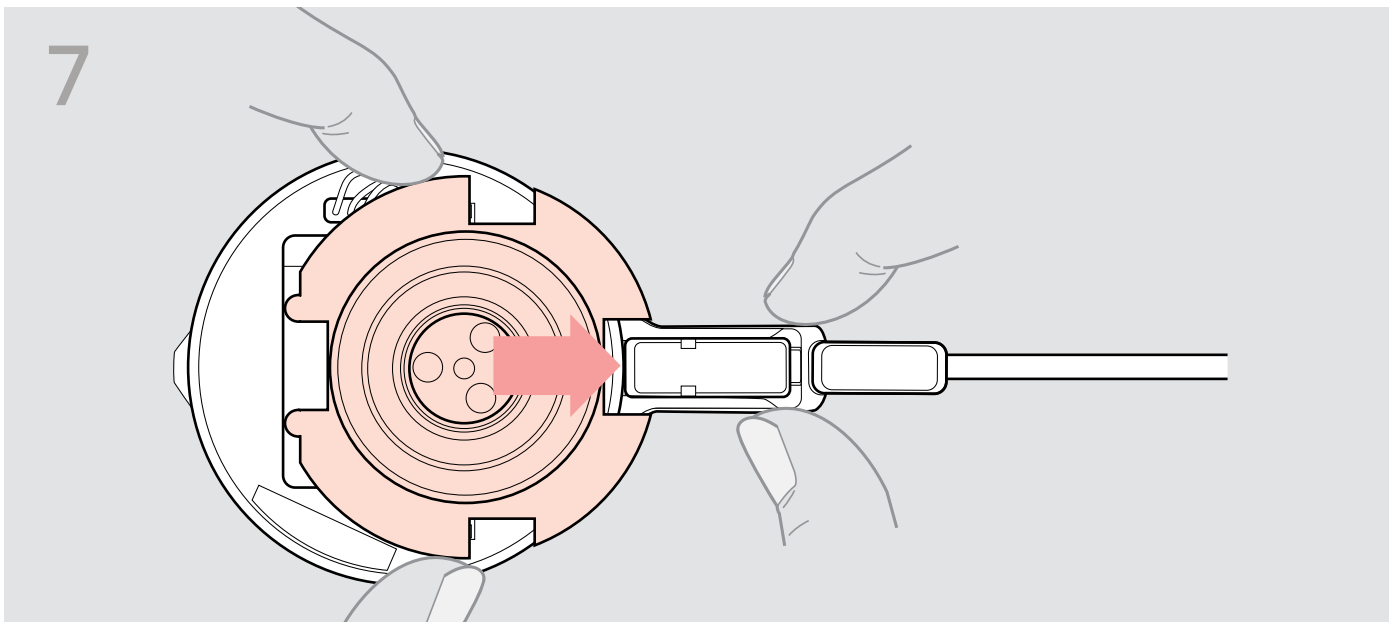
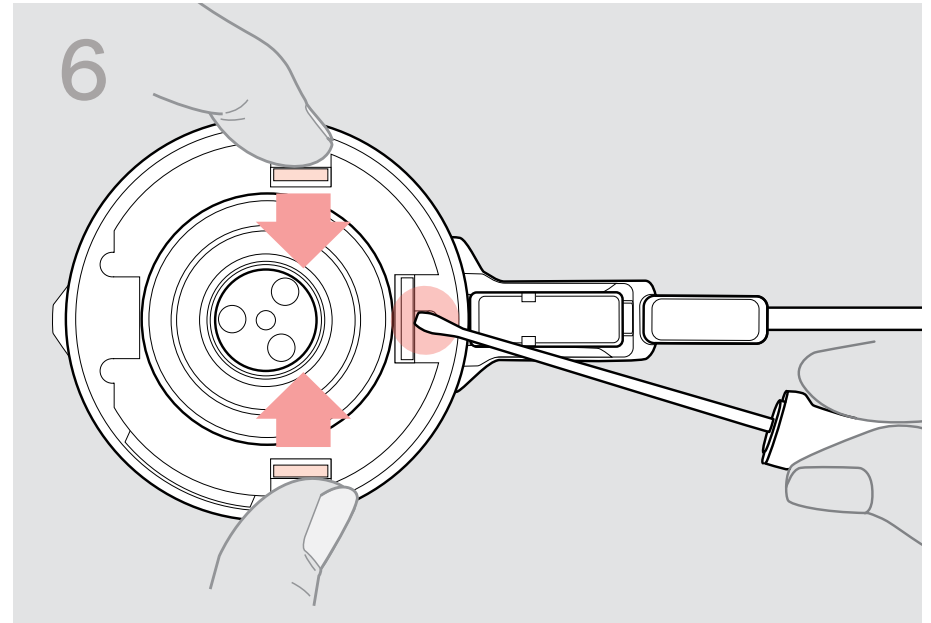
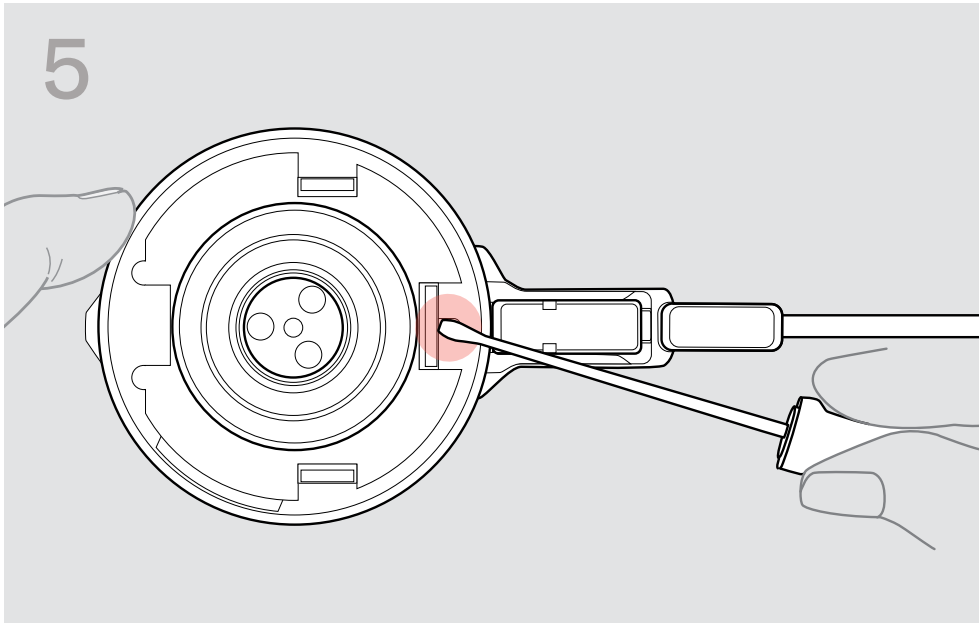
THE POWER OF AUDIO

Battery Removal Guide



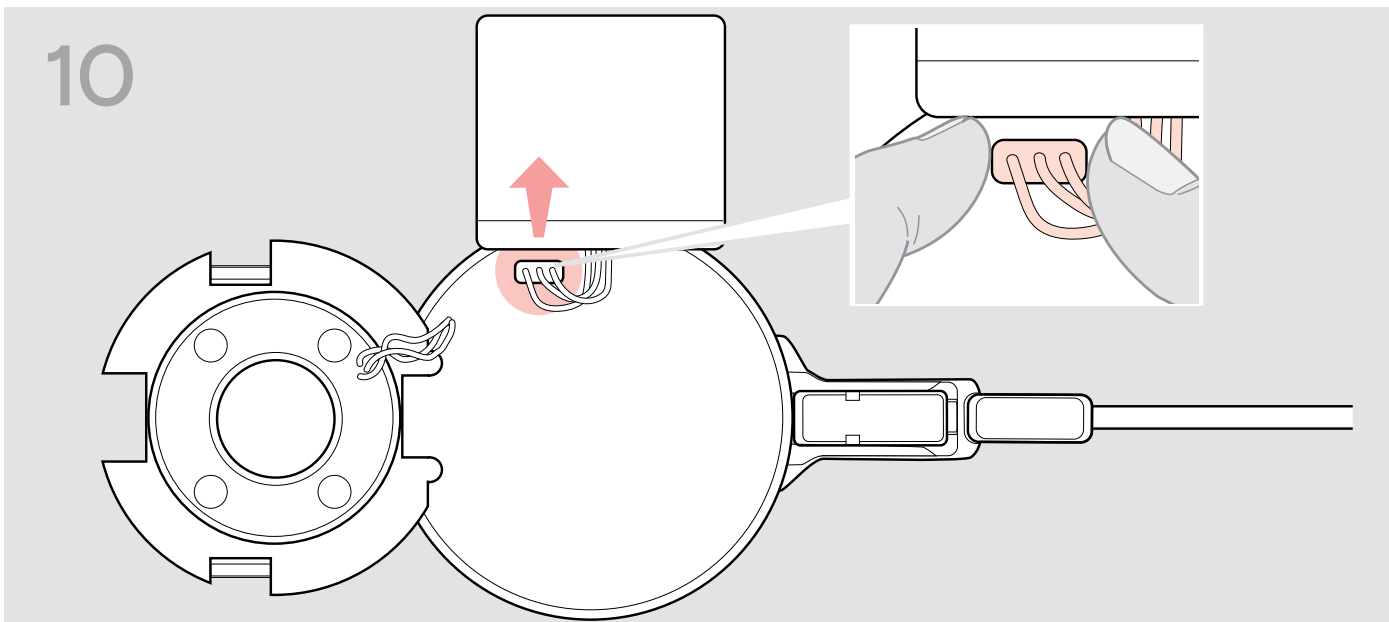
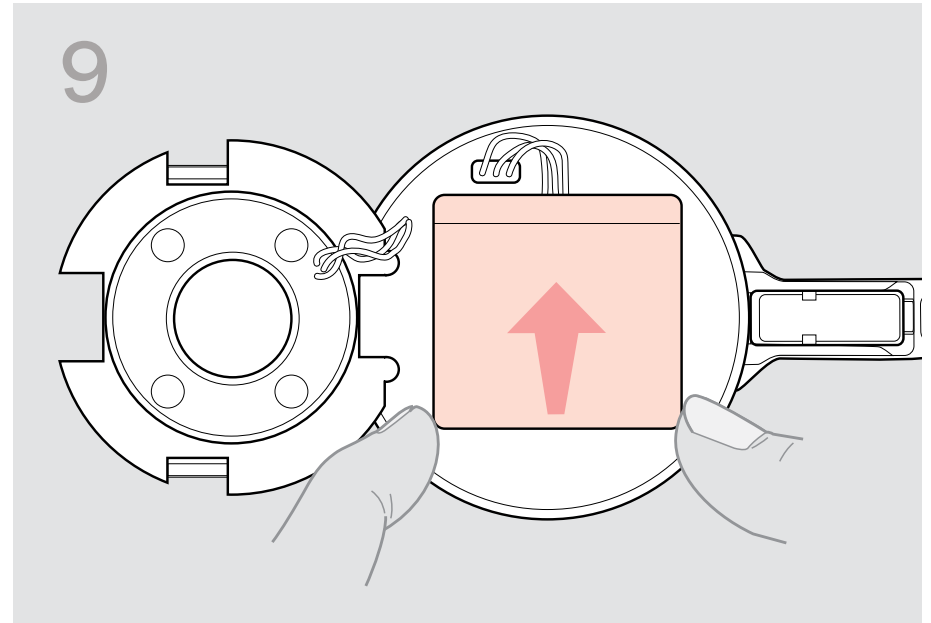
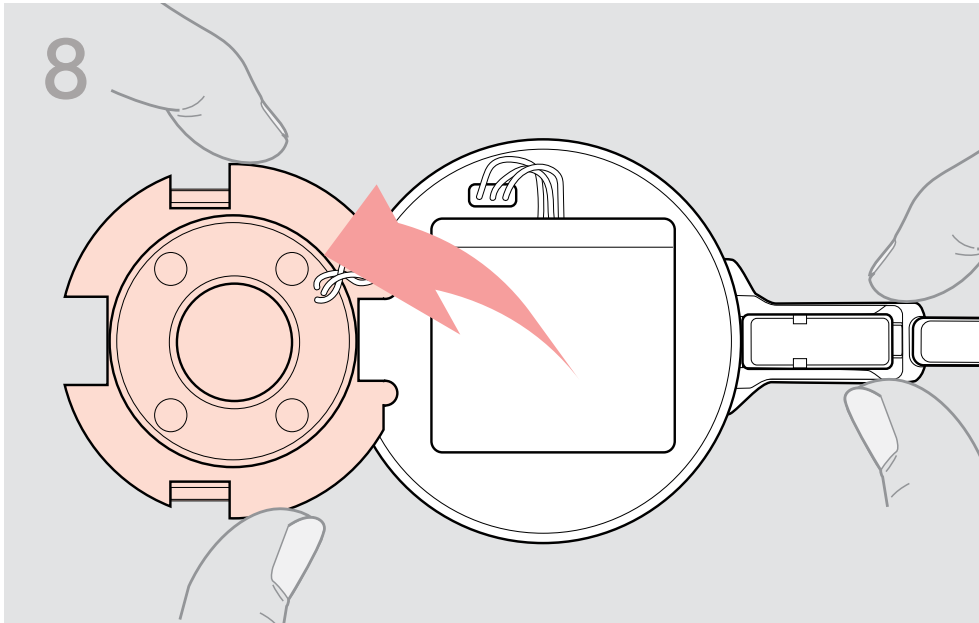
1. Rotate the holder with the charging pin away from the microphone boom.
2. Slide one finger into the small recess on the headband or wearing style adapter.
3. Pull the two units apart from each other.
4. Remove the headset from the holder.

Battery Removal Guide



5. Press the first clamp with a screwdriver. The battery compartment lifts a bit.
6. Press the other two clamps with your fingers.
7. Move the battery compartment cover in direction of the headset holder until you overcome a slight resistance.

Battery Removal Guide



8. Open the battery compartment cover.
9. Lift the rechargeable battery.
10. Unplug the connector and remove of the rechargeable battery.